

Pediatric Specialty Center

INFORMATIONAL FORUM

Tuesday, December 14, 2010

First Project of DMC Capital Building Program

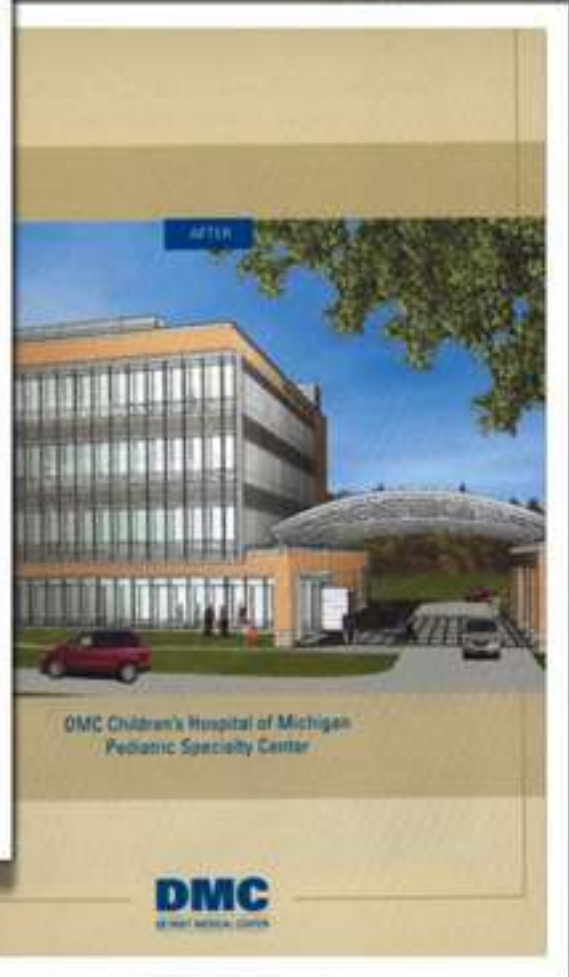
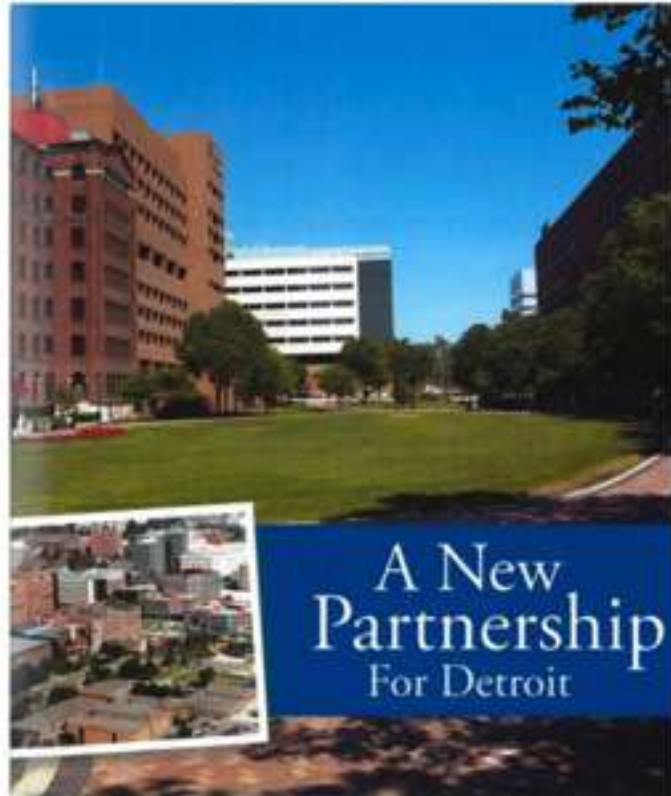
DMC Children's Hospital of Michigan Construction of Four-Story Expanded, Cutting-Edge Pediatric Specialty Center

The Children's Hospital of Michigan was built in 1971 with a capacity to hospitalize more than 1,000. The operating rooms were built to handle more than 1,200. Clinics were built to handle 4,000 children.

To meet the needs of Michigan's children we will build the Children's Hospital of Michigan to meet extraordinary patient demand.

The new outpatient services is a flexible facility that emphasizes children's Hospital. By facilitating patients access to services, inpatient facilities, specialty clinics, and physicians' offices, the Center's

new outpatient rehabilitation clinic, and specialty clinics. The fourth floor houses physician office suites. The design of the Center complements the existing campus. The Center frees up space in the Main Hospital.



DMC
DETROIT MEDICAL CENTER

VANGUARD
HEALTH SYSTEMS

DMC
DETROIT MEDICAL CENTER

Brinkley
LLC

DMC & Vanguard

- Capital Building Program
- 15 distinct projects spread over three DMC campuses
- \$500 million dollars total project cost
- Project budgets: \$2.3 million to \$126 million (const. cost)
- Complex projects - operating hospital environment requiring a high degree of skill and experience
- The single largest private investment in the city's history

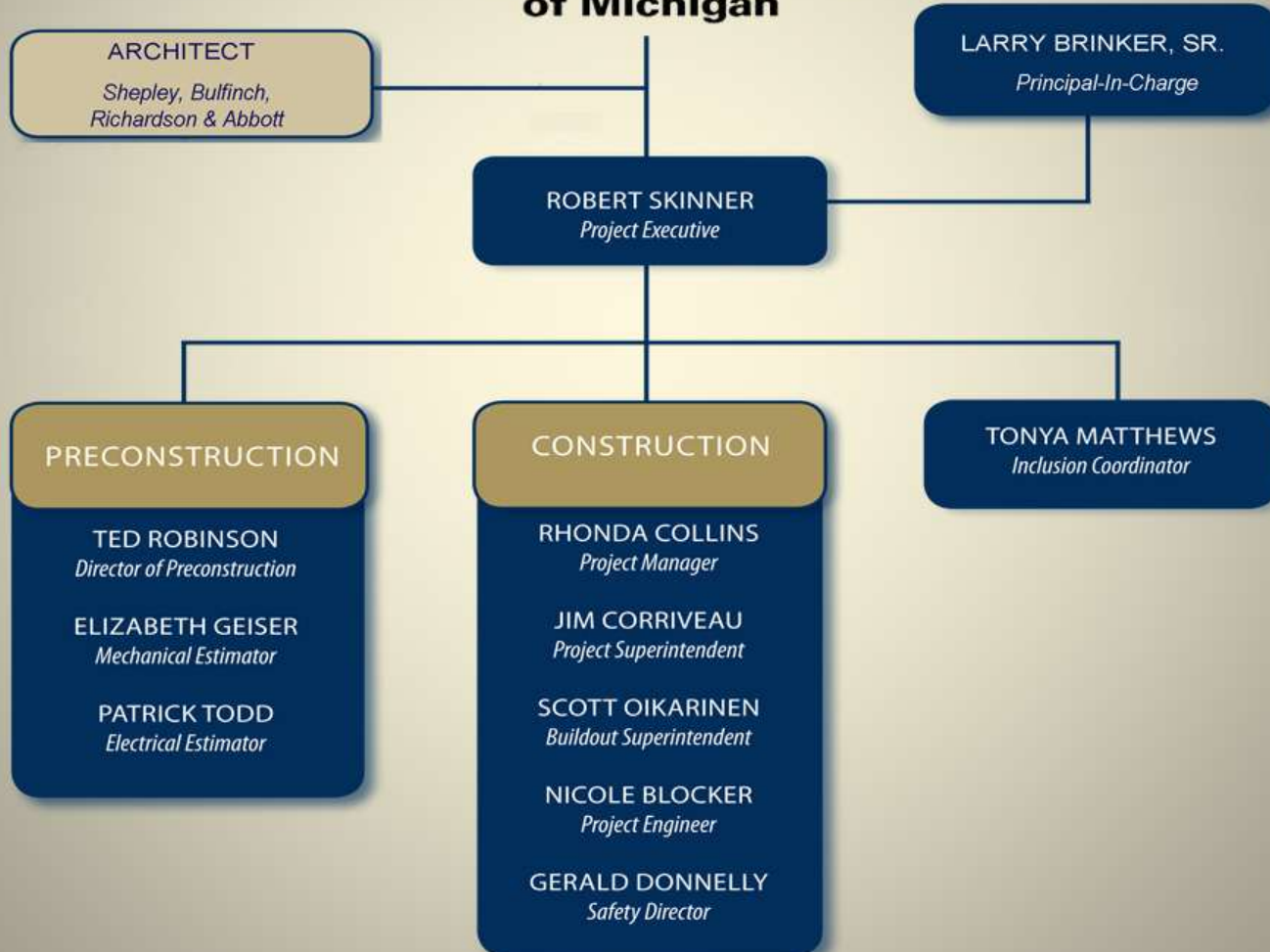


- Construction Manager for DMC Pediatric Specialty Center
- Joint Venture
 - L.S. Brinker Company
 - DHB & MBE Certified
 - Barton Malow Company
- Proven Team with Proven Results

Project Team



**Children's Hospital
of Michigan**



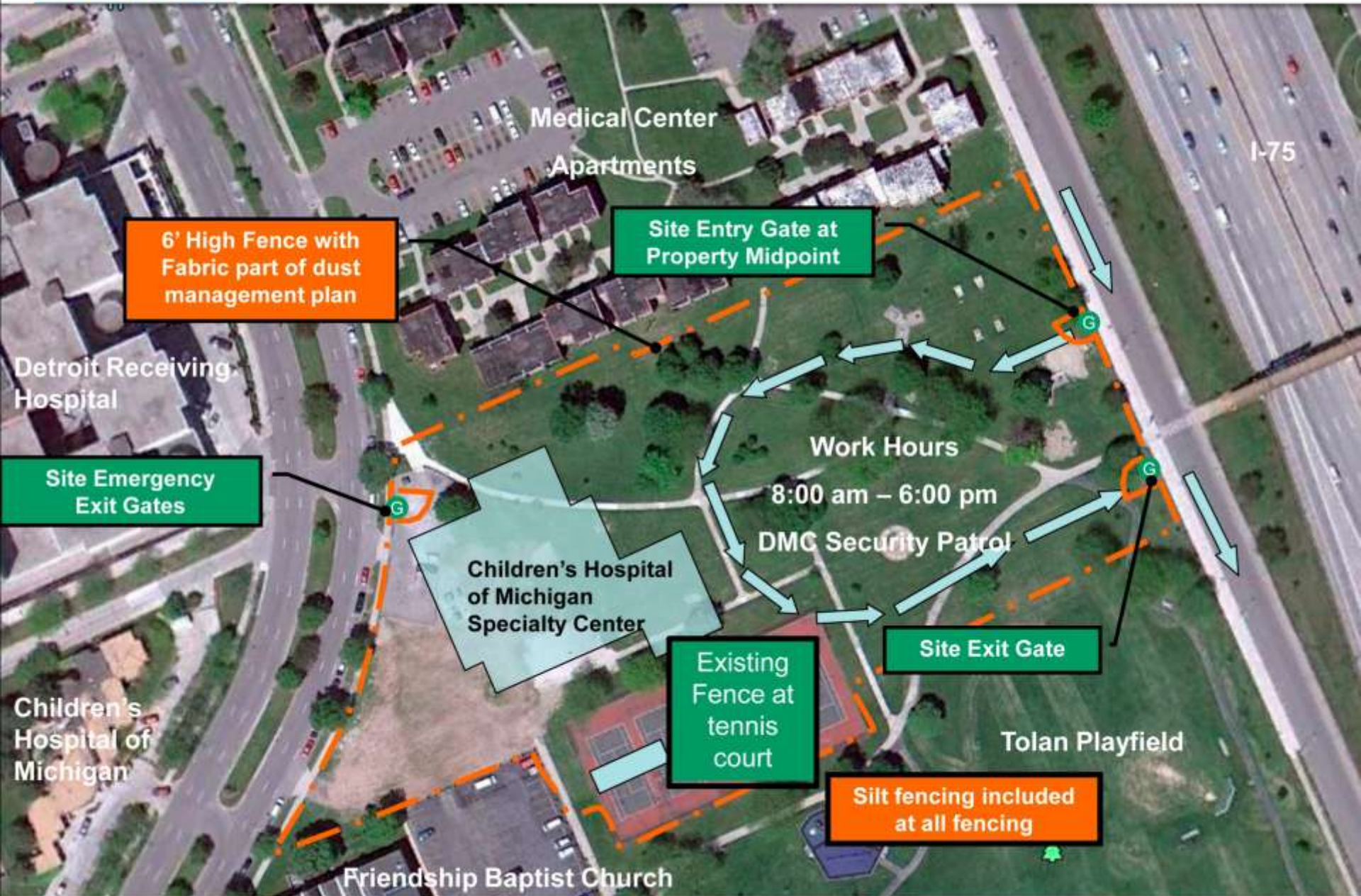
Project Information

- The new 4-story 105,550 sq. ft. masonry and glass building with basement and mechanical penthouse.
- The Pediatric Center consolidates outpatient services that emphasize primary and preventative care.
- The General Pediatrics Clinic, Comprehensive Rehabilitation Clinic, and Specialty Clinics occupy 3 floors with the fourth floor housing physician office suites.
- Patient parking is adjacent to the building's main covered entrance.
- Glass covered canopy for drop off of patients visible from Beaubien St.



Project Specifics:

- New construction
- \$28 Million
- 12 months of construction
- Winter 2010 start date



Bid & Award Schedule

Bid Pack	Drawings Available	Bids Due
BP 1 – Site Utility Relocation		Awarded
BP 2 – Building Core & Shell	December 8, 2010	December 20, 2010
BP 3 – Building Finishes & MEP	Mid January	Late January

Bid Categories

Bid Package #2	Bid Package #3
<ul style="list-style-type: none">2.1 Earthwork2.2 Concrete2.3 Masonry2.4 Structural Steel2.5 Drywall2.6 Roofing2.7 Exterior Glass/Glazing2.8 Fabricated Control Booths2.9 Elevators <i>Future BP 2 Items</i> 2.10 Site Improvements2.11 Landscaping2.12 Fencing	<ul style="list-style-type: none">3.1 Misc. Metals/Ladders3.2 Carpentry3.3 Interior Glass3.4 General Trades<ul style="list-style-type: none">DrywallAcoustical CeilingsDoors & HardwareSpecialties (Div. 10-13)Fabric PanelsFolding DoorsRadiation Protection3.5 Painting and Floor Sealants3.6 Ceramic Tile and Terrazzo3.7 Carpet and Resilient3.8 Mechanical - Plumbing3.9 Mechanical - HVAC3.10 Fire Protection3.11 Electrical

Prequalification Topics

- Financial Strength
- Insurance
- Bonding
- Safety
- Capabilities
- Experience
- Certifications



Prequalification Process

- DMC Approved Bidders List

www.dmc.org

- Brinker, LLC. Prequalification

www.bartonmalow.com

The screenshot shows the 'Welcome to Barton Malow's Online Pre-qualification' page. It includes a list of requirements for pre-qualification, such as providing a recent financial statement, a surety bond, and a recent 2006 Form 2854. Below the requirements is a login form with fields for 'Email Address' and 'Password', and a 'Submit' button. A red banner above the login form says 'If you are a new contractor click the Register button to submit your information.' The page footer contains the copyright notice '© 2006 Barton Malow Inc. All rights reserved.'



The Specialty Hospitals of the DMC.

- ABOUT DMC
- PATIENT SERVICES
- PHYSICIAN SERVICES
- MEDICAL LIBRARY
- SERVICE LINES
- DMC HOSPITALS



- REQUEST AN APPOINTMENT
- FIND A DOCTOR
- REQUEST AN MRI
- TALK TO DMC
- MAPS, HOURS LOCATIONS
- Home | Site Map | Email | Printer-friendly
- TEXT SIZE: A- A+ SHARE

Current ER Wait Time is:

00:14

CHILDREN'S HOSPITAL OF MICHIGAN

00:11

DETROIT RECEIVING HOSPITAL

00:09

DMC SURGERY HOSPITAL

00:12

HURON VALLEY-SINAI HOSPITAL

00:13

SINAI-GRACE HOSPITAL

Select a hospital's stopwatch for maps and directions.

CARDIO TEAM ONE DMC
IS YOUR HEART IN THE RIGHT PLACE? 1- 888-DMC-2500

For actual DMC ER Wait times:
Text "ER" to 42660
 or click here to download the App!

Search this site

DMC Construction UPDATE

DMC A New Partnership For Detroit

DMC JOBS →

Click/Call 888-DMC-2500 to find a Specialist

Dr. Bruce Terrio

Pledging... Compassion, Commitment, Community
 CHECK OUT DMC'S CAREER OPPORTUNITIES.

01 02 03 04 05

Patients worldwide are coming to Detroit.

Find out why - check out Emory King's Medical Video Library today.

Click Here



Reshaping the DMC



Vanguard's commitment to Detroit is the single largest private investment in the city's history and will total \$850 million in capital improvements, making DMC more competitive locally and nationally. Together, we will build a world-class healthcare center in southeast Michigan.

BREAKING Ground  **Monday, November 1, 2010**
for a new specialty center all their own. 

[click here for event video and photos](#)

[Capital Building Program Updates](#)
(last updated 11/10/2010)

This page is updated whenever important information becomes available. It contains the latest information regarding Capital Building Program projects and schedules.



[Vendor Prequalification Link](#)
Click this link to learn how to become a Prequalified Vendor to participate in the Capital Building Program. You can also visit this link to view a current listing of prequalified vendors.

[View and Respond to a RFQ/RFP](#)
Prequalified Vendors can click this link to access current RFQ and RFP information and documents for upcoming construction projects.



[Supporting Documents](#)
Links to schematic project images and information supporting the DMC Capital Building Program are found here.

Click Here



Search this site 

DMC JOBS →

FIND YOUR **DMC Specialist**

▶ About DMC

▼ Press Portal

- THREE OF AMERICA'S SAFEST HOSP...
- DMC Detroit Receiving Hospital...
- Two DMC Hospitals are First in...
- DMC and Vanguard Extend Closin...





[CONTRACTOR PREQUALIFICATION STATEMENT](#)

(Click for form)

[List of Approved Prequalified Contractors](#)

(Click for list)

[List of Approved Prequalified Contractors Describing Core Specialties](#)

(Click for list)

Click Here



DMC Pediatric Specialty Center Participation Requirements

- **Construction Costs**
 - 30% overall Certified Businesses
(MBE, DBE, DHB, WBE combined)
- **Workforce Hours - Labor**
 - 50% Wayne County Residents
 - 25% Detroit Residents
 - 25% Minority

25% of all apprentices must be minority

Business Certifications

- **Detroit Headquartered Business (DHB)**
 - Headquarters is located within the City of Detroit
 - CEO/Highest-Level Management have offices and perform management functions at that location
- **Detroit Based Business (DBB)**
 - Business pays:
 - City Income Taxes
 - City Excise Taxes
 - City property Taxes



Business Certifications

- **Minority Business Enterprise (MBE)**
 - 51% bona fide minority ownership
 - Minorities control business policy and operations
- **Women Business Enterprise (WBE)**
 - 51% bona fide female ownership
 - Female controls business policy and operations



Workforce Strategies

- Job Fairs
- Apprenticeship Programs
- Internships
- Building better relationships with our community.
- More information to come at a later date



Inclusion Tracking

- The MMSDC has been engaged to monitor the Participation Requirements.

Bidding/Award

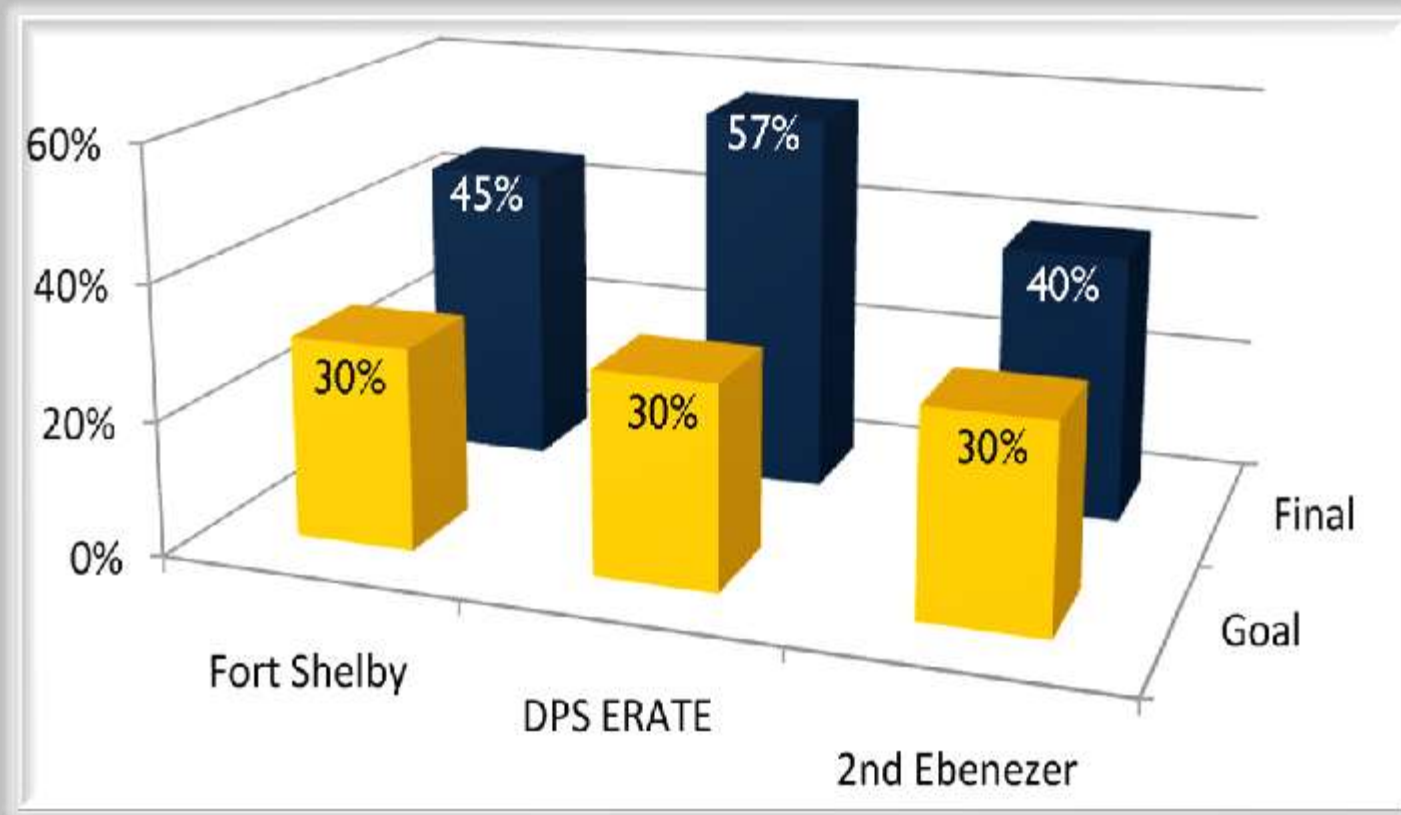
- Subcontractors shall define their targeted commitment percentages for each category in their proposals at bid time.
- Consideration for contract award.
- Certifications

During Construction

- Certified Payroll
- Monthly Reports
- Residency Verification
 - Utility Bill, Property Tax Bill, Rental Agreement, Valid State ID/Drivers License

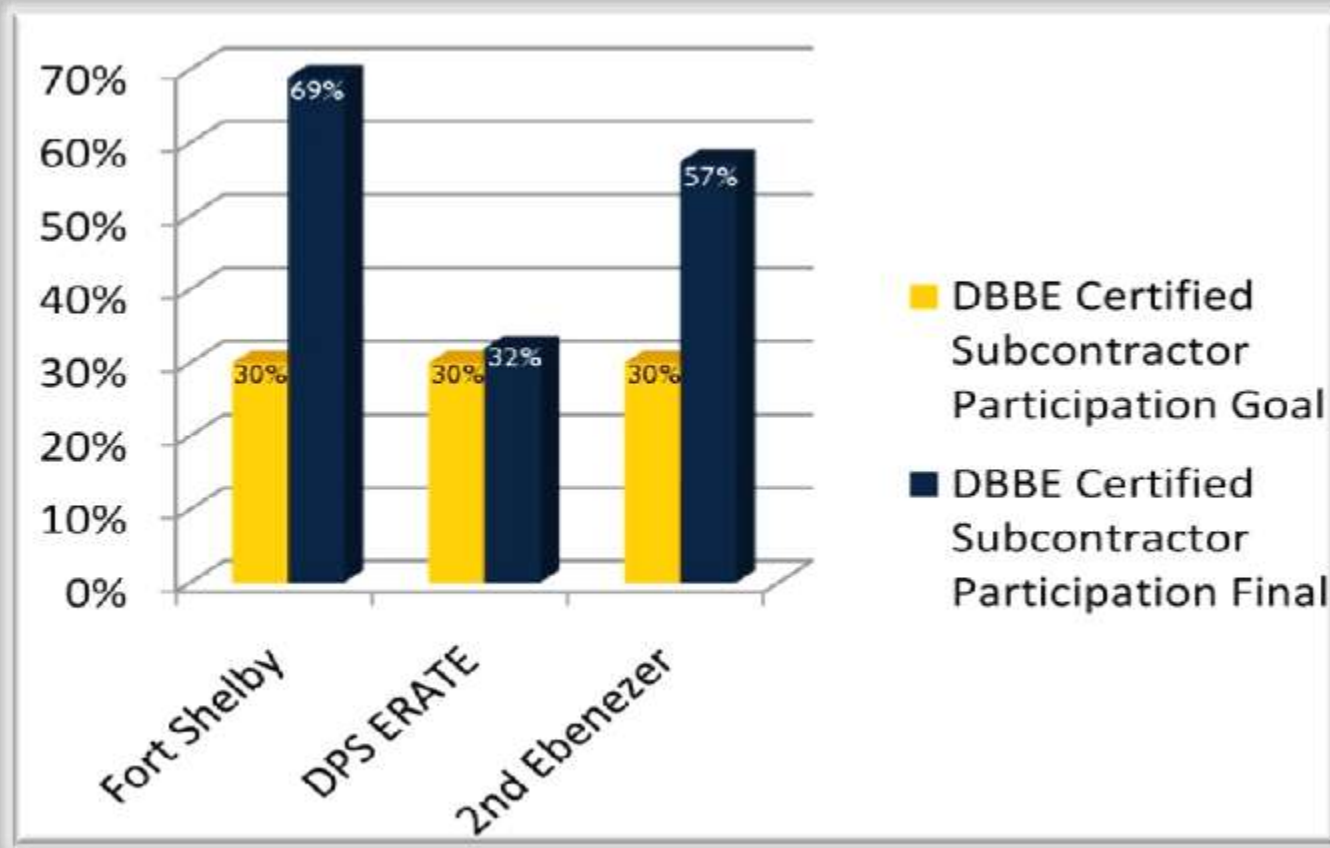
Proven Results: Community Participation Requirements

Minority Business Enterprise



Proven Results: Community Participation Requirements: DBBE

Detroit Based Business Enterprise



Q & A

